



Product Information Sheet

LITHKEM SUPER

Lithkem Super is a specially formulated powder additive designed to accelerate setting times and increase early and final strengths, in a wide range of drymix mortars containing.

Cemkem Ltd
Wellington Street
Bury BL8 2BD
United Kingdom
sales@cemkem.co.uk
+44 (0) 161 762 0044

DESCRIPTION

Lithkem Super is our cost-effective accelerator designed to increase the hydration of CAC and CSA cement, producing reduced setting times, and increased early and final flexural and compressive strengths.

Lithkem Super increases the formation of calcium aluminate hydrates in OPC/CAC binder systems and increases the formation of ettringite in OPC/CAC/CS binder systems, it can also be used to accelerate Calcium Sulfoaluminate (CSA) cement. **Lithkem Super** is optimised to prevent surface spotting on SLU's, improving surface appearance.

BENEFITS

Key benefits of **Lithkem Super** are:



**SIGNIFICANTLY REDUCES
SETTING TIMES**



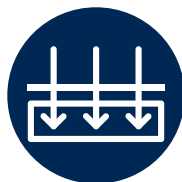
**ENHANCES EARLY
AND FINAL STRENGTHS**



**IMPROVES SURFACE
APPEARANCE IN SLU**



**EFFECTIVE IN OPC-RICH,
CAC-RICH AND CSA
FORMULATIONS**



**IMPROVES ADHESION
STRENGTHS**



**COST-EFFECTIVE
ALTERNATIVE TO LITHIUM
CARBONATE**



APPLICATIONS

Lithkem Super is formulated for use in fast setting drymix mortars containing CAC and CSA cements such as; self-levelling underlayments (SLU's), fast-setting tile adhesives, grouts and repair mortars. **Lithkem Super** is effective in OPC-rich and CAC-rich formulations and is suitable for use with all cement types and hydraulic binders, including ground granulated blast-furnace slag (GGBS), pulverised fly ash (PFA) and gypsum.

Lithkem Super can be used on its own or together with Cemkem's retarder range*

**See Cemkem's Revokem range.*

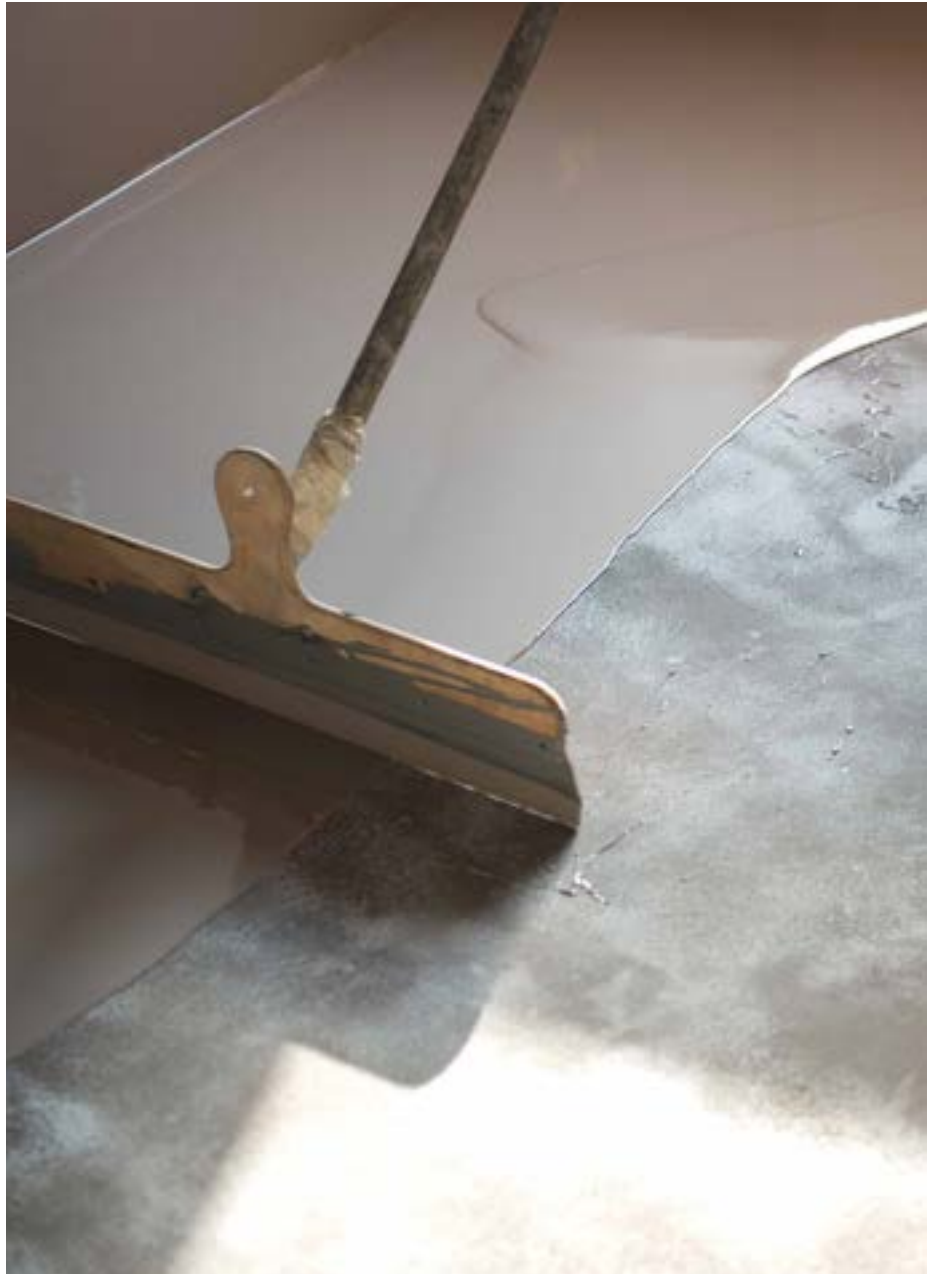
ADDITION RATES

The optimum dose is dependent on mix design, binder content, ambient temperatures and requirements for open and set times. Natural variations found in hydraulic binders will also affect the required dose.

For typical applications:

- 0.1 - 0.5% by weight of formulation

** The optimum dose should be determined by completing appropriate laboratory trials.*



STORAGE

Lithkem Super should be kept dry and between 5°C and 30°C avoiding extremes of temperature and moisture. Avoid freezing and do not store in direct sunlight.

If stored correctly in sealed packaging, this product has a minimum shelf life of 12 months.

PACKAGING

Lithkem Super is supplied in 20kg bags.

HANDLING

Full MSDS available on request. H302: Harmful if swallowed. H319: Causes serious eye irritation. Wear protective gloves/protective clothing/eye protection/face protection.



TECHNICAL DATA

Composition

Inorganic compounds

Appearance

Fine off - white powder

Bulk Density (g/ml)

Approx. 0.65

Cemkem is part of the Rakem Group. The Group specialises in the distribution of raw materials and formulated products to the coatings, construction and chemical industry.



Chemical distributor to
the coatings, plastics and
inks sector



Confidential toll
manufacturer of water-
based products



Specialist distributor to
the cement and
horticulture sector

With over 20 years experience within the construction industry, Cemkem's product portfolio has been formulated to enhance and improve construction products, with the aim to benefit the manufacturer, the customer and most importantly the end-user. The Group aims for consistent and constant development across all raw materials and finished products.